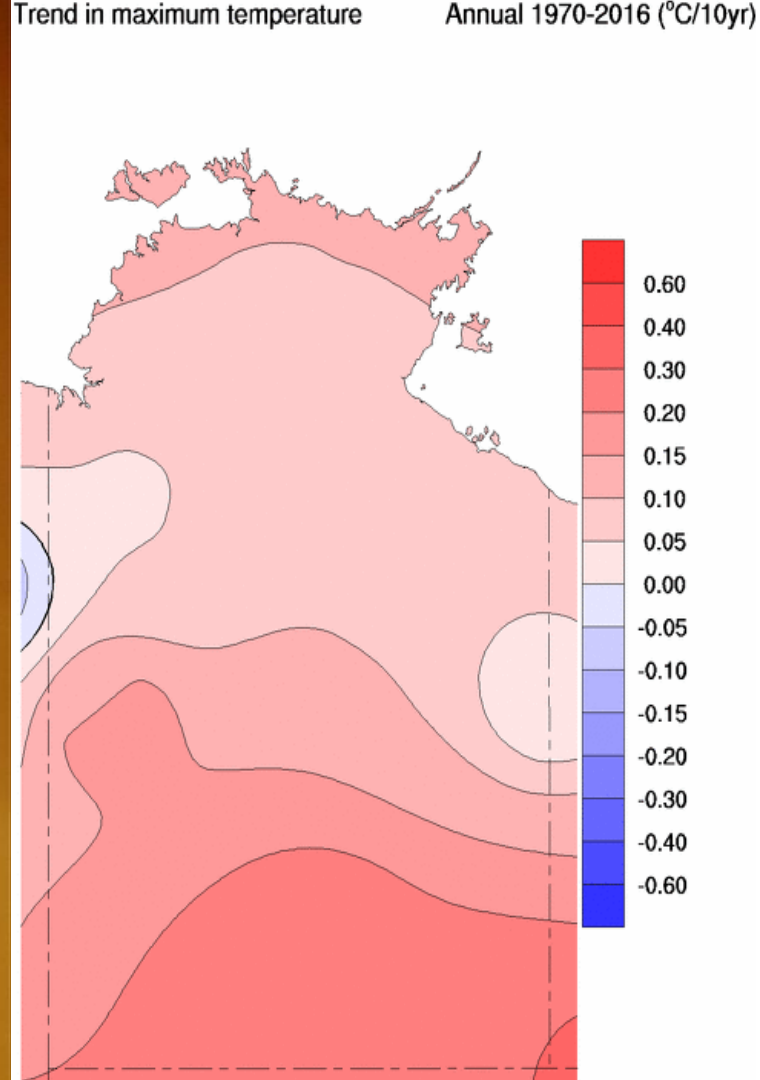


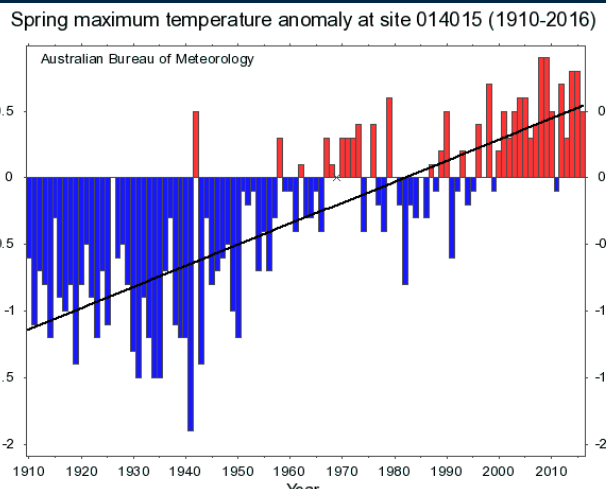
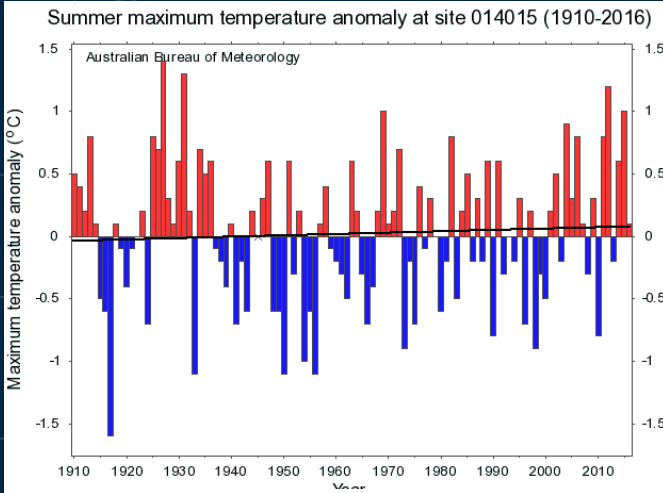
Darwin's changing climate

Greg Browning
Regional Climate Services Manager, BoM NT

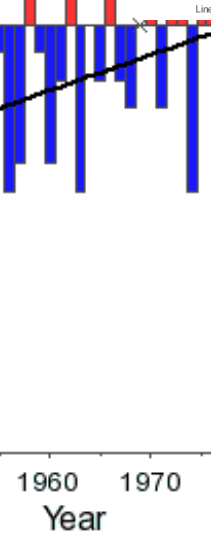
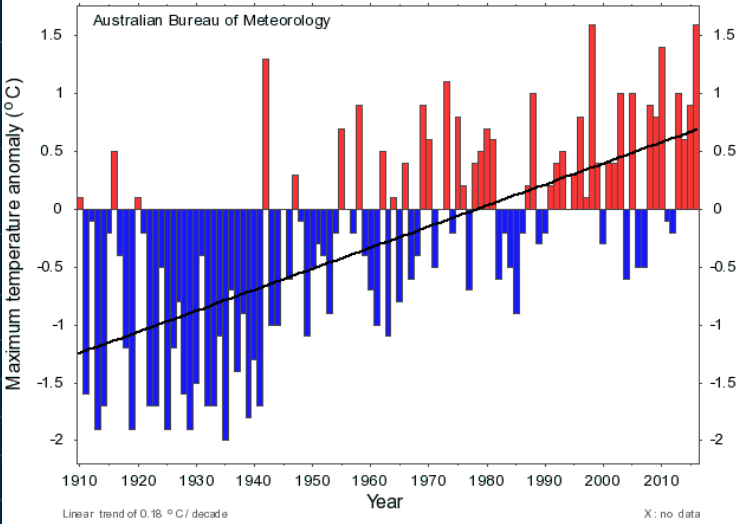


temperature trend

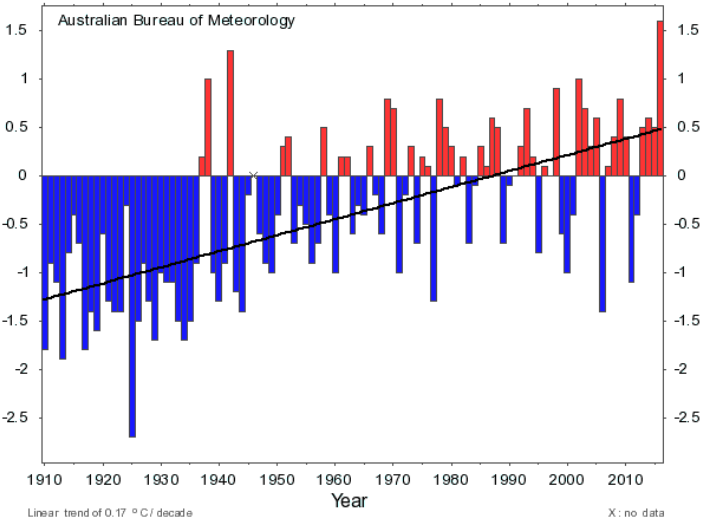
Australian Bureau of Meteorology



Winter maximum temperature anomaly at site 014015 (1910-2016)



Autumn maximum temperature anomaly at site 014015 (1910-2016)



X: no data

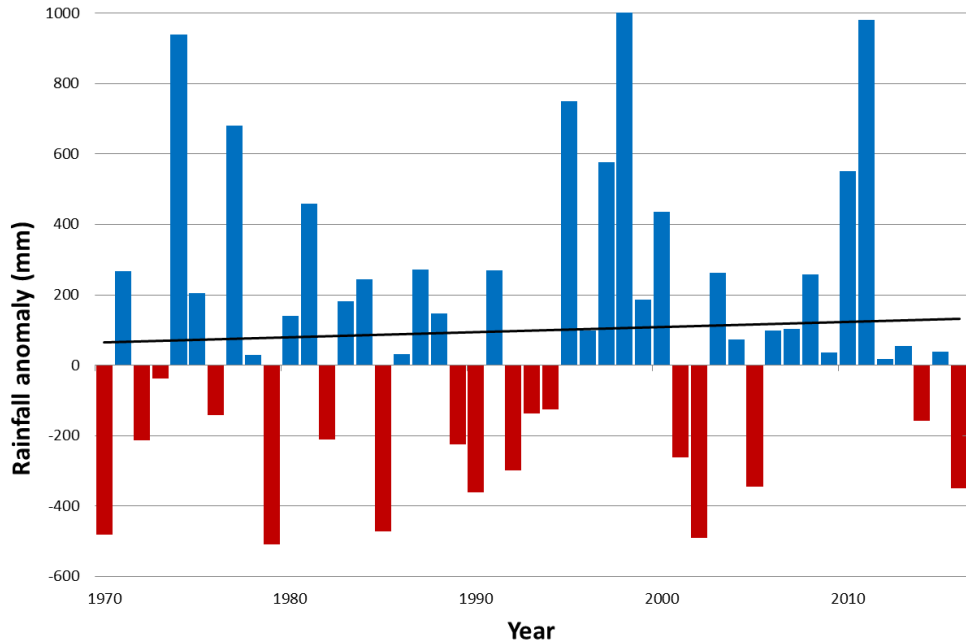
X: no data



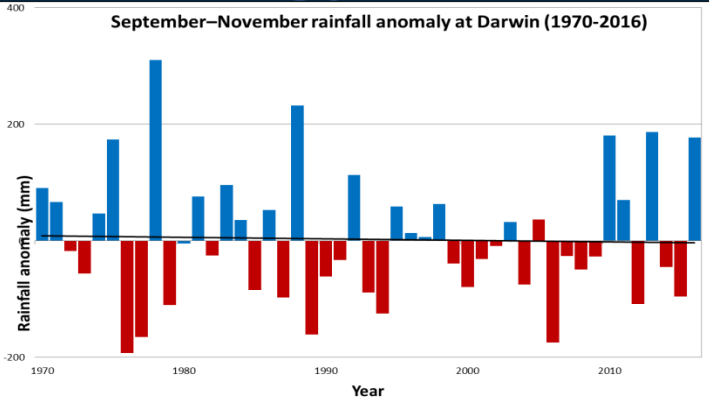
Rainfall trends at Darwin

Annual rainfall anomaly at Darwin

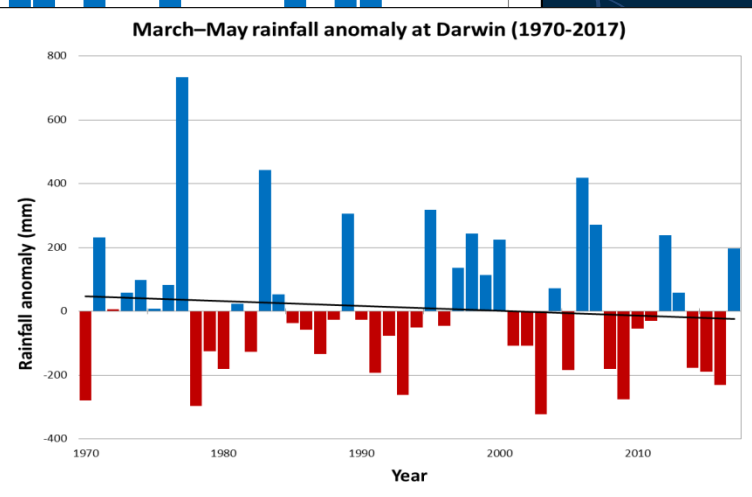
Annual rainfall anomaly at Darwin (1970-2016)



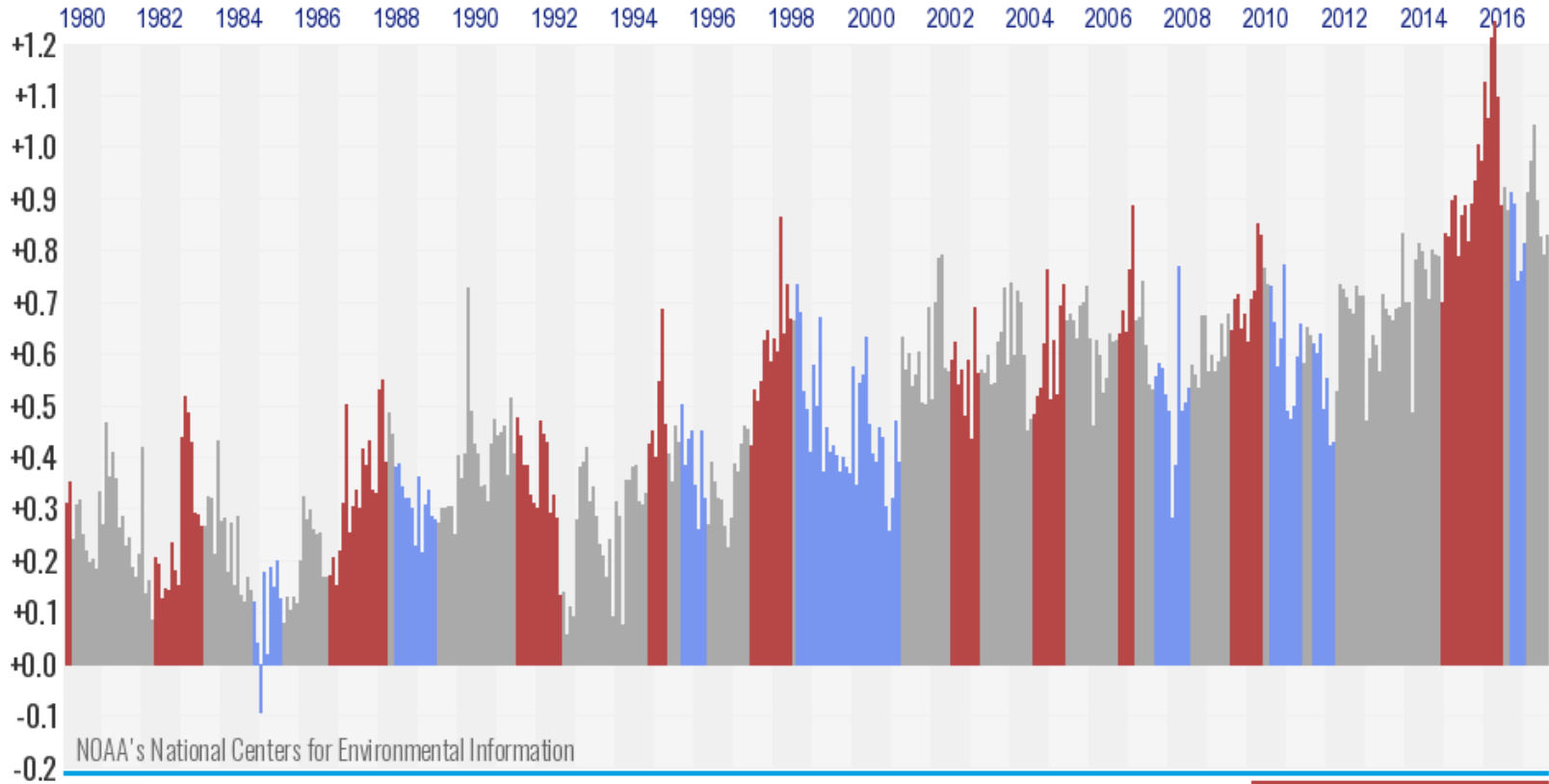
September–November rainfall anomaly at Darwin (1970-2016)



March–May rainfall anomaly at Darwin (1970-2017)



Monthly temperature anomalies and ENSO

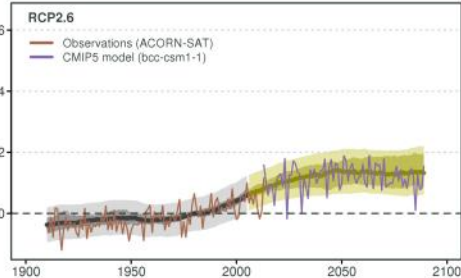
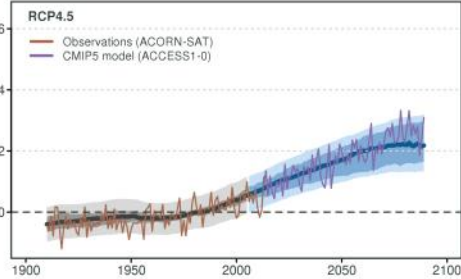
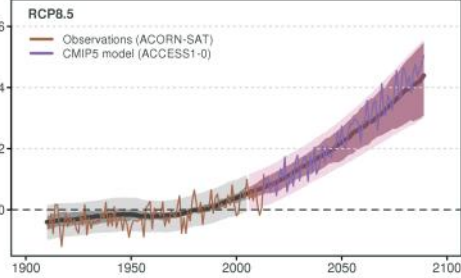


Global Surface Temperature Departures in °C, colored by monthly ENSO values
Jan 1980 through Jul 2017





Projected temperatures

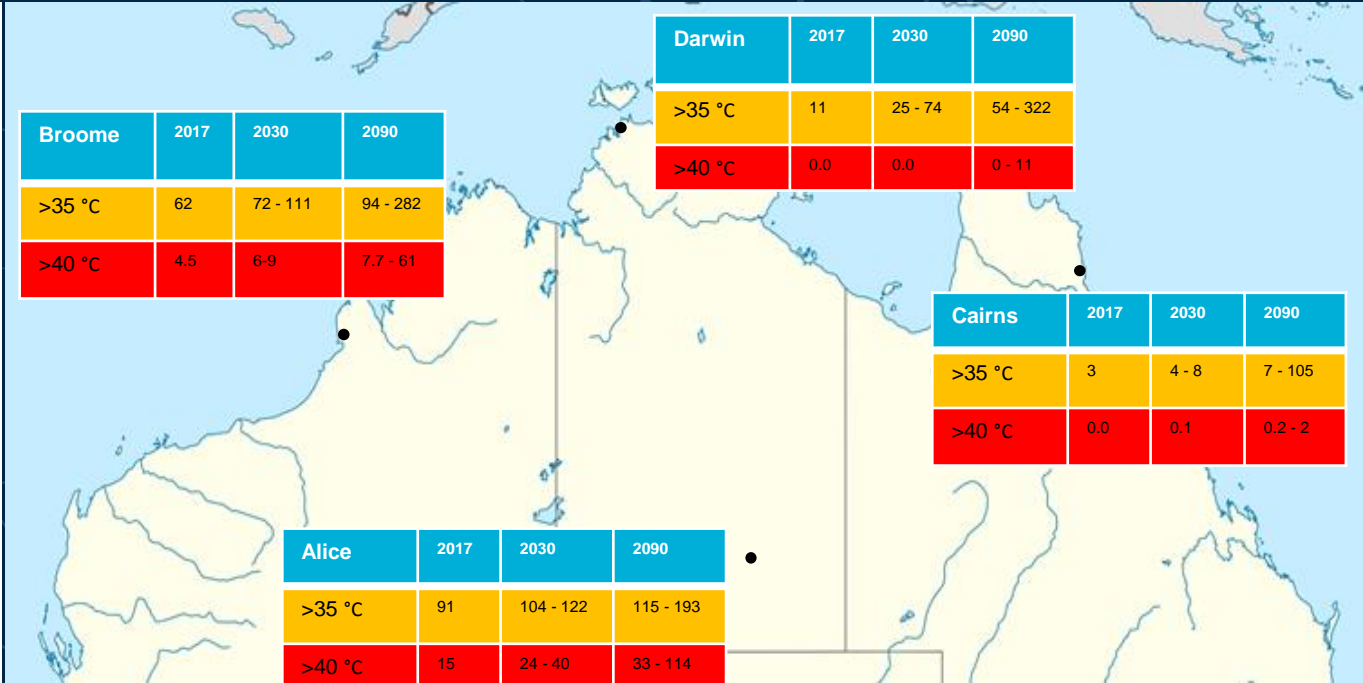


Broome	2017	2030	2090
>35 °C	62	72 - 111	94 - 282
>40 °C	4.5	6-9	7.7 - 61

Darwin	2017	2030	2090
>35 °C	11	25 - 74	54 - 322
>40 °C	0.0	0.0	0 - 11

Cairns	2017	2030	2090
>35 °C	3	4 - 8	7 - 105
>40 °C	0.0	0.1	0.2 - 2

Alice	2017	2030	2090
>35 °C	91	104 - 122	115 - 193
>40 °C	15	24 - 40	33 - 114

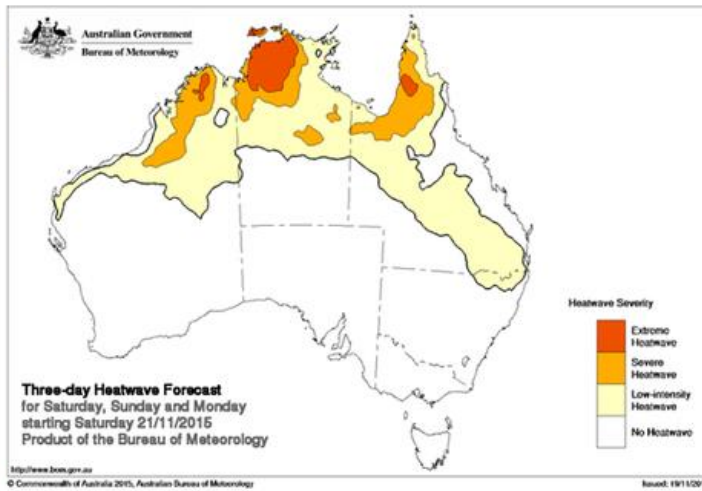




BoM national heatwave service



NT Heatwave



Heatwave forecast for Saturday, Sunday and Monday

- Heatwave conditions continue to intensify across the western Top End as we head towards the weekend, becoming extreme in parts.
- Heat is widespread throughout the Territory, with severe to extreme heatwave conditions set to extend across much of the northern half of the Territory by early next week.
- The peak of the heat looks set to occur on the weekend, when parts of the western Top End are set to see maximum temperatures around 5 degrees above average.
- Parts of Kakadu, and areas around Katherine, could reach as high as 43°C on Sunday and Monday.
- Temperatures so far above average are uncommon in the Tropics, where day-to-day changes in maximum and minimum temperatures are usually small.
- Minimum temperatures are also forecast to remain above average across the Top End.
- Warmer than average overnight temperatures are contributing to the heatwave conditions, which when combined with a prolonged period of very hot daytime temperatures, increases heat stress on a person's body.



Australian Government
Bureau of Meteorology

Thank you

greg.browning@bom.gov.au
(08) 8920 3813

